

# Changing the SolidWorks Student Design Kit Serial Number

Any existing customers may change their serial number now to: **9020 0034 1984 0985 3TH4 KXKJ**. The 2011-2012 SDK will be available on the regular download site ([www.solidworks.com/europeansdk](http://www.solidworks.com/europeansdk))

1. This document outlines how to change the SolidWorks Serial Number for an existing Student Design Kit install.
  2. The full ADMINISTRATOR logon must be used to change the serial number for SolidWorks
  3. Navigate to the “Control Panel” and “Add/Remove Programs”.
- Scroll down to SolidWorks xxxx and click “Change” (see Figure 1).

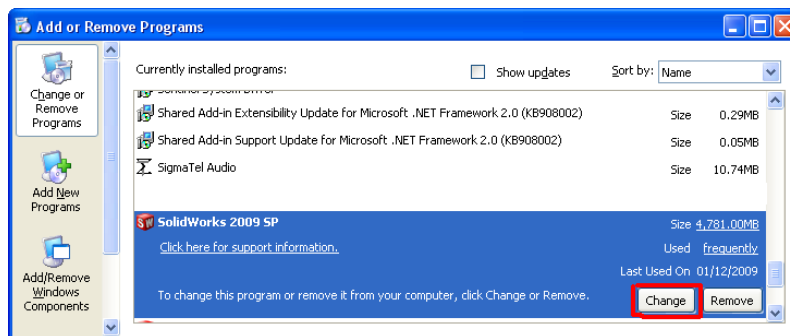


Figure 1.

4. The “SolidWorks Installation Manager” will now start. The serial number that appears must be replaced. Enter the following new Serial Number: **9020 0034 1984 0985 3TH4 KXKJ** and click Next (see Figure 2).



Figure 2.

5. After clicking “Next” the Installation Manager may contact SolidWorks over the Internet to verify the Serial Number. See Figure 3. (If you do not have the Internet, click Next to proceed.)

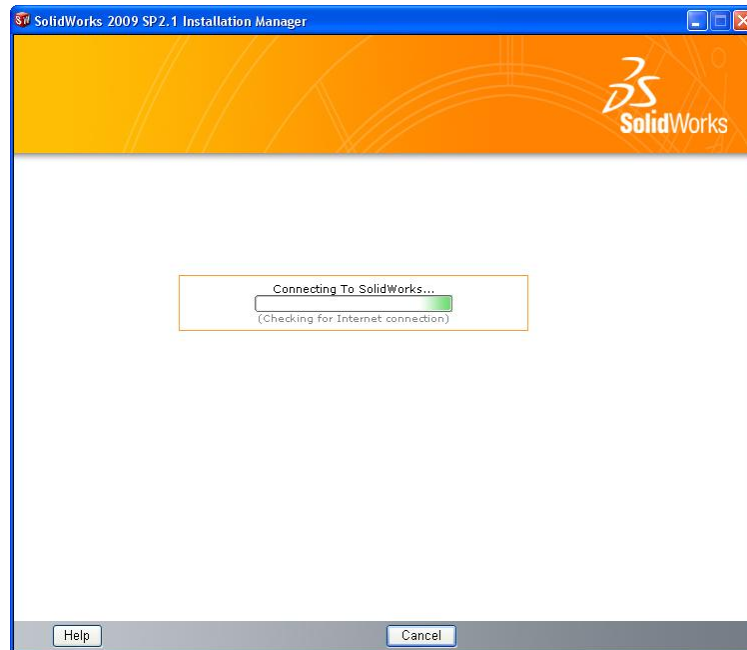


Figure 3.

6. On the “Modify the existing individual installation” page, and click Next to continue with the modification. See Figure 4.



Figure 4.

7. At this stage we accept the defaults, and click Next and Next again to complete the install. (see Figure 5, 6.)

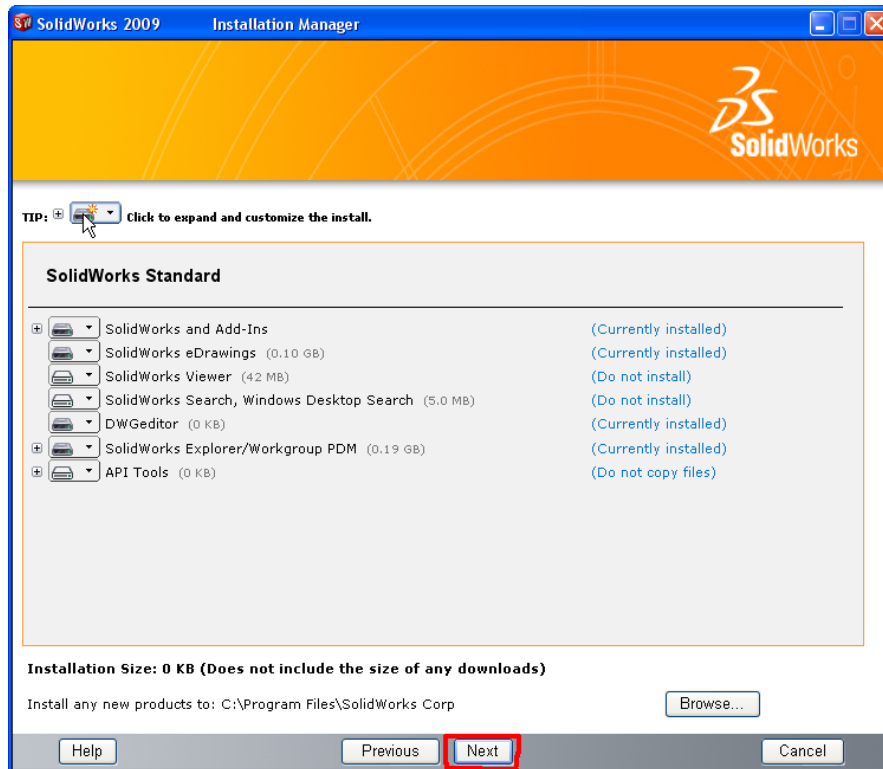


Figure 5.

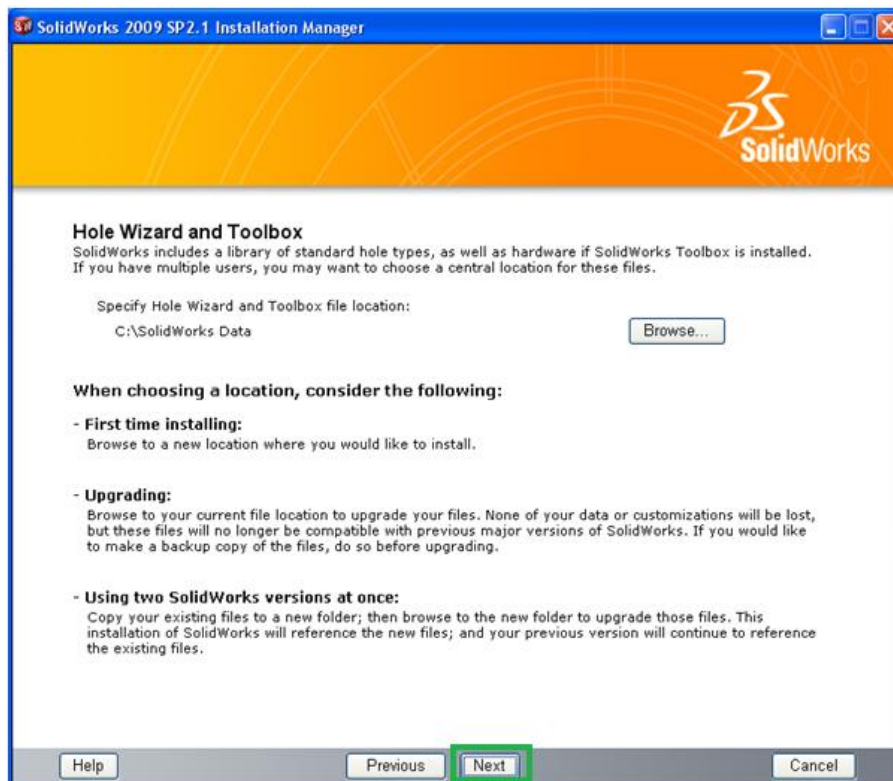


Figure 6.

- Installation Complete. Deselect the first 3 selection boxes. Choose “Yes, I want to participate (RECOMMENDED)”. Click “Finish” to complete and finish the Installation, as in Figure 7.

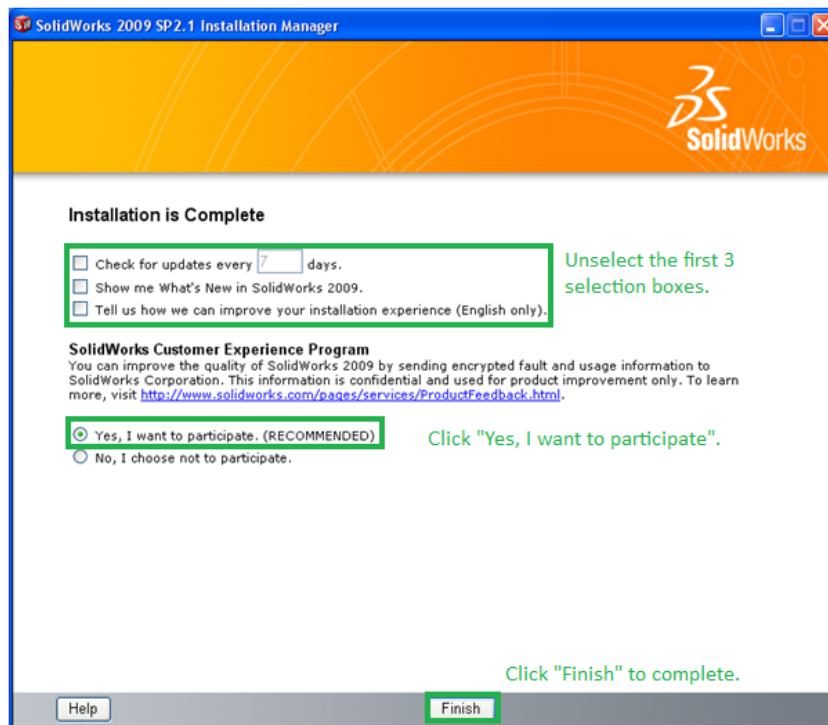


Figure 7.

- Double-left Click on the “SolidWorks 2xxx SP2.1” icon (Figure 8) to start SolidWorks 2009 as ADMINISTRATOR. It could take up to two minutes for SolidWorks 2xxx to start, **be patient**.



Figure 8.

10. SolidWorks Activation Wizard appears. Choose “I want to activate my SolidWorks product now”. Click Next to continue as in Figure 9.

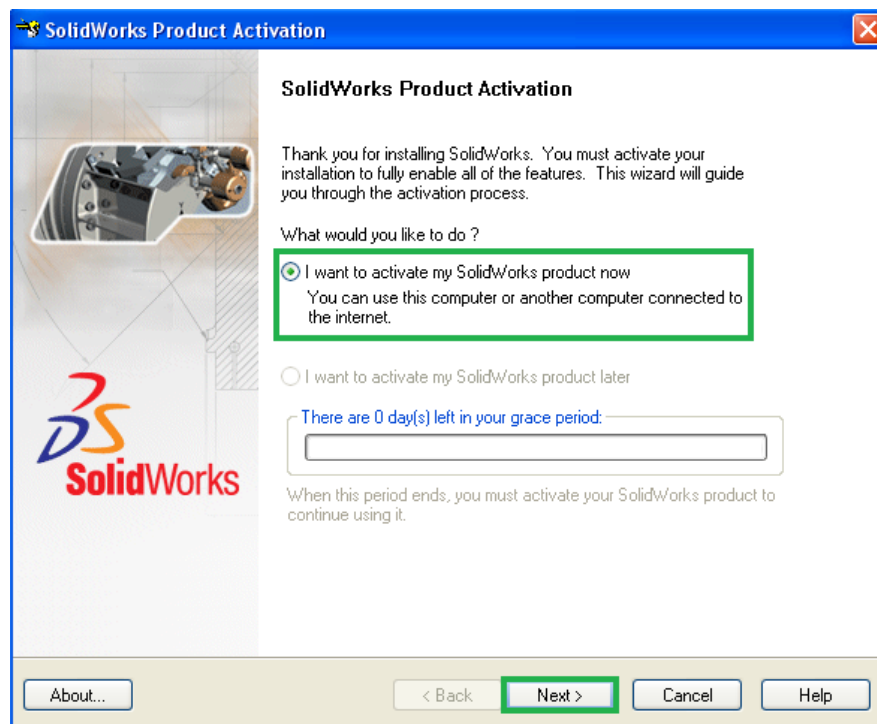


Figure 9.

11. Choose to activate SolidWorks “Automatically over the Internet (recommended)”, and click Next ( Figure 10).  
If you do not have the Internet, choose “Manually via e-mail” and follow the onscreen instructions.

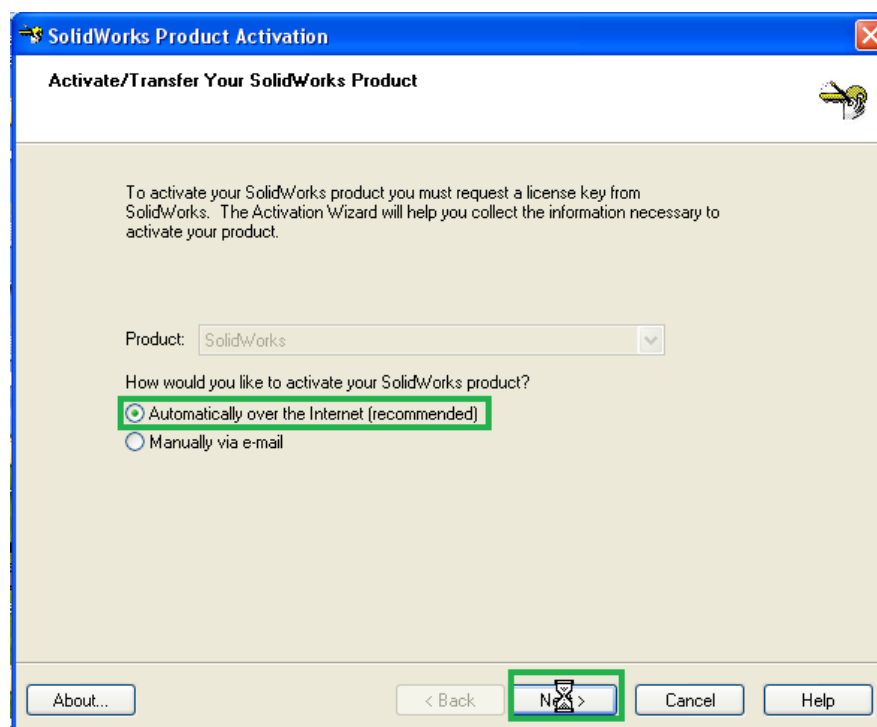
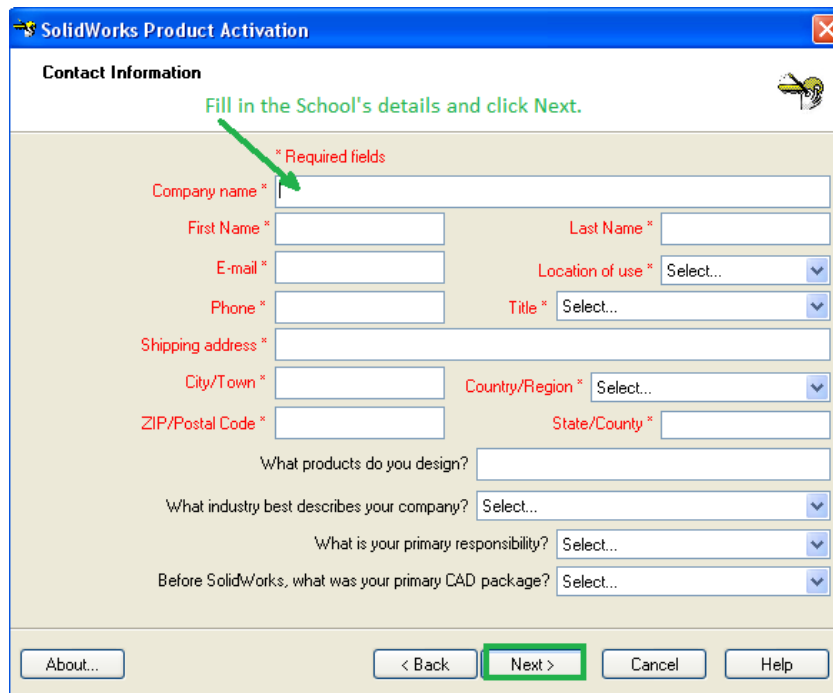


Figure 10.

12. Enter your Student Details to Activate SolidWorks. As accurately as possible enter all the correct details. (see Figure 11) Note - An entry must be placed for all of the fields marked in red. Enter 000 for the ZIP/Postal Code



The image shows the 'SolidWorks Product Activation' dialog box, specifically the 'Contact Information' tab. The dialog has a title bar with the SolidWorks logo and a close button. Below the title bar, the text 'Contact Information' is displayed. A green instruction reads 'Fill in the School's details and click Next.' with a green arrow pointing to the 'Company name' field. A legend indicates that red asterisks denote 'Required fields'. The form contains several input fields and dropdown menus: 'Company name \*', 'First Name \*', 'Last Name \*', 'E-mail \*', 'Location of use \*' (dropdown), 'Phone \*', 'Title \*' (dropdown), 'Shipping address \*', 'City/Town \*', 'Country/Region \*' (dropdown), 'ZIP/Postal Code \*', and 'State/County \*'. Below these are four more dropdown menus: 'What products do you design?', 'What industry best describes your company?', 'What is your primary responsibility?', and 'Before SolidWorks, what was your primary CAD package?'. At the bottom, there are four buttons: 'About...', '< Back', 'Next >' (highlighted with a green border), 'Cancel', and 'Help'.

Figure 11.

13. A dialog box will appear to indicate that Activation has succeeded. Select 'Finish'.

---

**SolidWorks Student Design Kit 2011-2012**  
is now correctly installed and Activated  
using the new Serial Number

---

#### Errors

If an error occurs in the setup, reboot the computer and logon as Administrator. Start going through the install again. It will pick up where it left off.